



THE POINT

BY GRACE BAY RESORTS





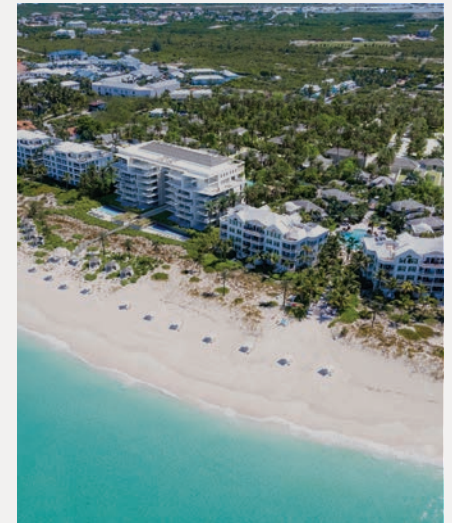
A RARE OFFERING ON AWARD WINNING GRACE BAY BEACH, TURKS & CAICOS



Grace Bay Resorts is delighted to introduce the latest chapter in the evolution of the iconic Point Grace resort, one of the boutique pioneers in Turks & Caicos upon its completion in 1999. As a member of Small Luxury Hotels of the World, Point Grace has been renowned for its prestigious stretch of beach on Grace Bay, unparalleled level of tranquility, and one of the island's iconic restaurants, Grace's Cottage. All of these features are within walking distance of some of Providenciales' finest shops, dining options, and attractions.

Spanning over 9.5 acres, The Point is an exceptional low-density oceanfront development of the highest caliber. The development comprises 38 stunning oceanfront condominiums, ranging from two to five bedrooms, along with a diverse range of new resort amenities. These include a new adults-only swimming pool and three additional pools for families, new oceanfront dining and bars, a new world-class spa and fitness center, tennis and pickle ball courts, a discovery center for kids, and a new arrival pavilion. All of these amenities have been redesigned with a new entrance off the main thoroughfare of Grace Bay.

Furthermore, the project is unveiling 16 innovative and sophisticated "casitas" in an elegant residential grove. Each casita boasts two bedrooms, a private pool, and garden. These casitas also enjoy all of the benefits and amenities of Point Grace, just steps away from its dining and beach. They offer a level of privacy that has not been seen in a resort on Grace Bay before.



The Point is envisioned by award-winning SWA Architects, one of Providenciales' most accomplished design firms, and Young Huh Interior Design, an AD-100 and Elle Décor A-List repeat winner. It is destined to become one of the most sought-after addresses in Turks & Caicos.

SWA
ARCHITECTS

YOUNG HUH
INTERIOR DESIGN







THE POINT

BY GRACE BAY RESORTS





THE POINT

BY GRACE BAY RESORTS

THE POINT DEVELOPMENT

- A. THE RESIDENCES - 2 to 5 bedrooms
- B. POOL LOFTS - 1 bedroom
- C. THE CASITAS - 2 bedrooms
- D. POINT GRACE

THE POINT AMENITIES

- 1. RESORT POOLS
- 2. ADULT POOL
- 3. CABANAS
- 4. LOUNGE AREA



Renderings and plans are an artist representation and does not form part of any contract, or a warranty. The plans and renderings demonstrated depicts the intended layout at the time of designing this document. Prepared for graphic purposes and is subject to change at the discretion of the developer.

THE POINT RESIDENCES

R700 5 BEDROOM PENTHOUSE 6,563 SQ. FT	R701/2 4/5 BEDROOM WITH LOCKOFF OPTION 4,262 SQ. FT	R703/4 4/5 BEDROOM WITH LOCKOFF OPTION 4,262 SQ. FT	R710 5 BEDROOM PENTHOUSE 6,563 SQ. FT
	R601/2 4/5 BEDROOM WITH LOCKOFF OPTION 4,262 SQ. FT	R603/4 4/5 BEDROOM WITH LOCKOFF OPTION 4,262 SQ. FT	

R501/502 3 BEDROOM WITH LOCKOUT 2,619 SQ. FT	R503/504 2 BEDROOM WITH LOCKOUT 2,097 SQ. FT	R505/506 3 BEDROOM WITH LOCKOUT 2,619 SQ. FT	R500 2 BEDROOM 2,242 SQ. FT	R507/508 3 BEDROOM WITH LOCKOUT 2,619 SQ. FT	R509/510 2 BEDROOM WITH LOCKOUT 2,097 SQ. FT	R511/512 3 BEDROOM WITH LOCKOUT 2,619 SQ. FT
R401/402 3 BEDROOM WITH LOCKOUT 2,619 SQ. FT	R403/404 2 BEDROOM WITH LOCKOUT 2,097 SQ. FT	R405/406 3 BEDROOM WITH LOCKOUT 2,619 SQ. FT	R400 2 BEDROOM 2,242 SQ. FT	R407/408 3 BEDROOM WITH LOCKOUT 2,619 SQ. FT	R409/410 2 BEDROOM WITH LOCKOUT 2,097 SQ. FT	R411/412 3 BEDROOM WITH LOCKOUT 2,619 SQ. FT
R301/302 3 BEDROOM WITH LOCKOUT 2,619 SQ. FT	R303/304 2 BEDROOM WITH LOCKOUT 2,097 SQ. FT	R305/306 3 BEDROOM WITH LOCKOUT 2,619 SQ. FT		R307/308 3 BEDROOM WITH LOCKOUT 2,619 SQ. FT	R309/310 2 BEDROOM WITH LOCKOUT 2,097 SQ. FT	R311/312 3 BEDROOM WITH LOCKOUT 2,619 SQ. FT
R201/202 3 BEDROOM WITH LOCKOUT 2,619 SQ. FT	R203/204 2 BEDROOM WITH LOCKOUT 2,097 SQ. FT	R205/206 3 BEDROOM WITH LOCKOUT 2,619 SQ. FT		R207/208 3 BEDROOM WITH LOCKOUT 2,619 SQ. FT	R209/210 2 BEDROOM WITH LOCKOUT 2,097 SQ. FT	R211/212 3 BEDROOM WITH LOCKOUT 2,619 SQ. FT
R101/102 3 BEDROOM WITH LOCKOUT & PLUNGE POOL 2,802 SQ. FT	R103/104 2 BEDROOM WITH LOCKOUT & PLUNGE POOL 2,251 SQ. FT	R105/106 3 BEDROOM WITH LOCKOUT & PLUNGE POOL 2,802 SQ. FT		R107/108 3 BEDROOM WITH LOCKOUT & PLUNGE POOL 2,802 SQ. FT	R109/110 2 BEDROOM WITH LOCKOUT & PLUNGE POOL 2,251 SQ. FT	R111/112 3 BEDROOM WITH LOCKOUT & PLUNGE POOL 2,802 SQ. FT

EAST - LE VELE

WEST - POINT GRACE

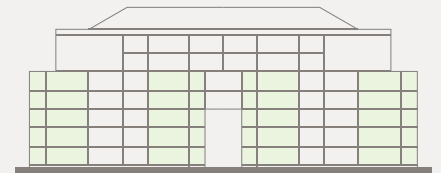
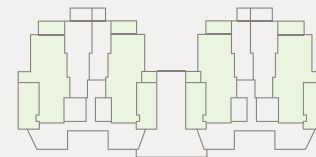
THE POINT RESIDENCES
THREE BEDROOM WITH LOCKOUT



INTERIOR SQ. FT: 2,284 ft²
EXTERIOR SQ. FT: 335 ft²
TOTAL: 2,619 ft²

Renderings and plans are an artist representation and does not form part of any contract, or a warranty. The plans and renderings demonstrated depicts the intended layout at the time of designing this document. Prepared for graphic purposes and is subject to change at the discretion of the developer.

LEVELS - GROUND TO FIFTH



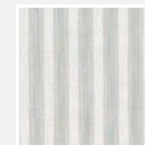
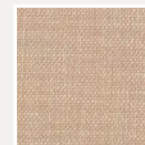
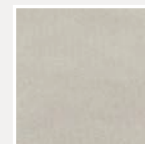
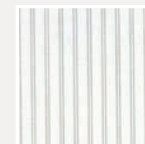
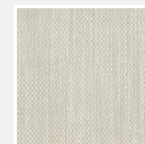


THE POINT RESIDENCES THREE BEDROOM INTERIORS

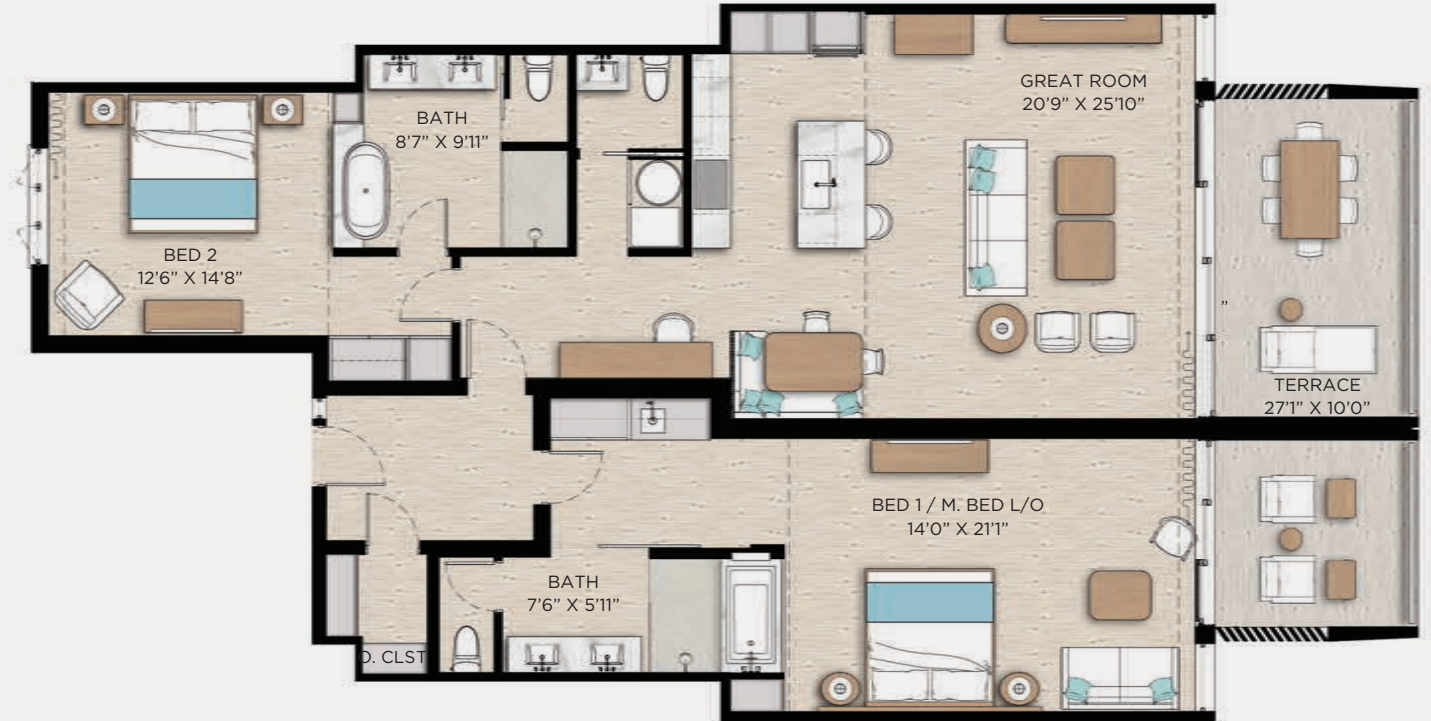
An artful collaboration between award-winning designers SWA Architects and Young Huh Interior Design, The Point 3 bedroom interiors capitalize on this breathtaking corner outlook.

Measuring 2,601 sq. ft, these residences combine ultra luxurious residential finishes and architecture with rental flexibility, where each home incorporates a lockout studio into the floor plan.

The new Point residences provide modern finishes and the highest quality appliances, with ceilings up to 10 feet, leading to expansive balconies with elegant glass balustrades and furnishings of the highest quality.

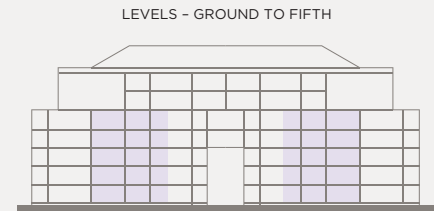
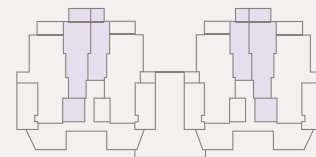


THE POINT RESIDENCES
TWO BEDROOM WITH LOCKOUT



INTERIOR SQ. FT: 1,807 ft²
 EXTERIOR SQ. FT: 290 ft²
TOTAL: 2,097 ft²

Renderings and plans are an artist representation and does not form part of any contract, or a warranty. The plans and renderings demonstrated depicts the intended layout at the time of designing this document. Prepared for graphic purposes and is subject to change at the discretion of the developer.

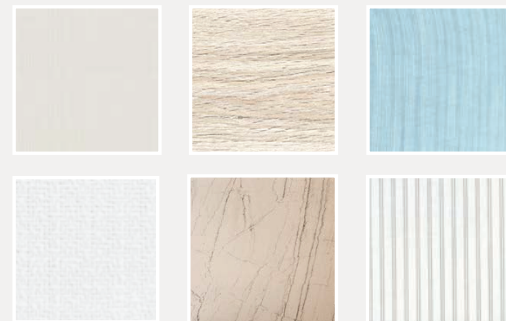




THE POINT RESIDENCES
TWO BEDROOM KITCHEN
AND LIVING AREA

The Point residences have introduced elegant new features such as a full bar within the living space and a unique private owner office that can be locked for personal use only for those owners wishing to work while on vacation.

These new homes enjoy modern detailing throughout and stunning ocean views enhanced by floor to ceiling impact-rated sliding glass doors & windows.



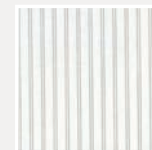
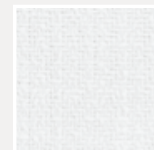
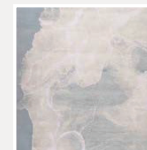




THE POINT RESIDENCES
TWO BEDROOM KITCHEN
AND LIVING AREA

Fresh and airy, the 2 bedroom interiors measure 2,095 sq. ft. and also incorporate an oceanfront lockout studio into the plan.

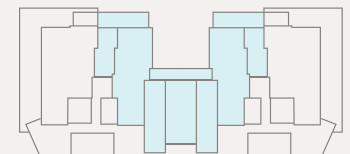
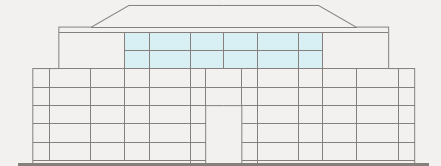
Also enjoying 10' ceilings and glass balustrades, these residences have a unique built-in banquette dining area, and enjoy elegant solid timber cabinetry and detailing, complimenting elegant Italian porcelain tiling, high-end appliances from Miele & Sub-Zero and full height kitchen back splash walls of solid stone.



THE POINT RESIDENCES
PENTHOUSE LEVEL - 4 BEDROOM WITH LOCKOUT



LEVELS - SIXTH AND SEVENTH

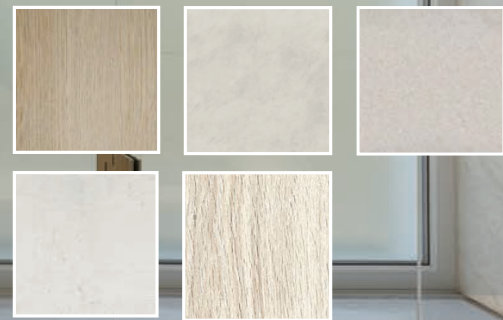


INTERIOR SQ. FT: 3,513 ft²
 EXTERIOR SQ. FT: 749 ft²
TOTAL: 4,262 ft²

Renderings and plans are an artist representation and does not form part of any contract, or a warranty. The plans and renderings demonstrated depicts the intended layout at the time of designing this document. Prepared for graphic purposes and is subject to change at the discretion of the developer.



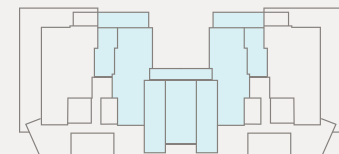
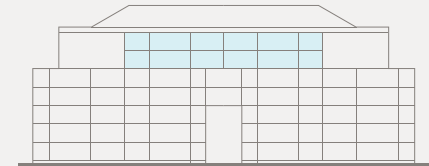
THE POINT RESIDENCE
INTERIOR BATHROOM



THE POINT RESIDENCES
PENTHOUSE LEVEL - 5 BEDROOM OPTION



LEVELS - SIXTH AND SEVENTH

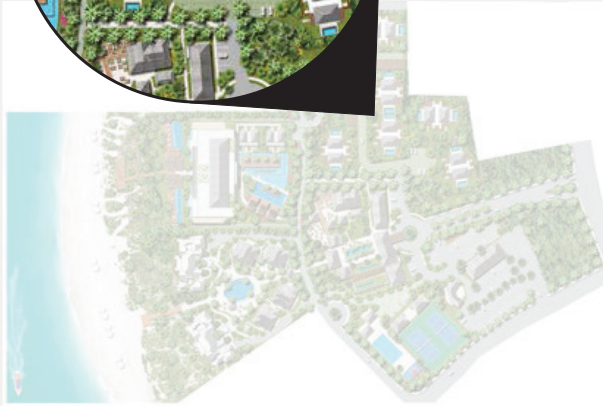


INTERIOR SQ. FT: 3,513 ft²
 EXTERIOR SQ. FT: 749 ft²
TOTAL: 4,262 ft²

Renderings and plans are an artist representation and does not form part of any contract, or a warranty. The plans and renderings demonstrated depicts the intended layout at the time of designing this document. Prepared for graphic purposes and is subject to change at the discretion of the developer.



THE POINT RESIDENCES
CASITAS



INTERIOR SQ. FT: 1,237 ft²
EXTERIOR SQ. FT: 731 ft²
POOL SQ. FT: 200 ft²
TOTAL: 2,168 ft²

Renderings and plans are an artist representation and does not form part of any contract, or a warranty. The plans and renderings demonstrated depicts the intended layout at the time of designing this document. Prepared for graphic purposes and is subject to change at the discretion of the developer.





THE POINT POOL LOFTS
ONE BEDROOM LOFT



INTERIOR SQ. FT: 952 ft²
EXTERIOR SQ. FT: 469 ft²
TOTAL: 1,421 ft²

Renderings and plans are an artist representation and does not form part of any contract, or a warranty. The plans and renderings demonstrated depicts the intended layout at the time of designing this document. Prepared for graphic purposes and is subject to change at the discretion of the developer.











SMALL
LUXURY
HOTELS
OF THE WORLD

GRACE | GRACE BAY RESORTS
HANDMADE EXPERIENCES SINCE 1993



Turks &
Caicos

Sotheby's
INTERNATIONAL REALTY

DISCOVER A STATE OF GRACE

Now offering a once-in-a-lifetime residential ownership opportunity.

For more information please e-mail:
info@tcsothebysrealty.com

THEPOINTTCI.COM



THE POINT

BY GRACE BAY RESORTS



THE POINT

BY GRACE BAY RESORTS

The images used in this brochure have been sourced from various platforms and artists. We have made our best efforts to ensure that all images used are properly licensed or are used with permission from the copyright owner. However, in the event that any image has been inadvertently used without the appropriate rights, we apologize for any oversight. If you believe that any image in this email has been used without the necessary permission or proper licensing, please contact us immediately so that we can rectify the situation.

